

MAXPRO® VMS

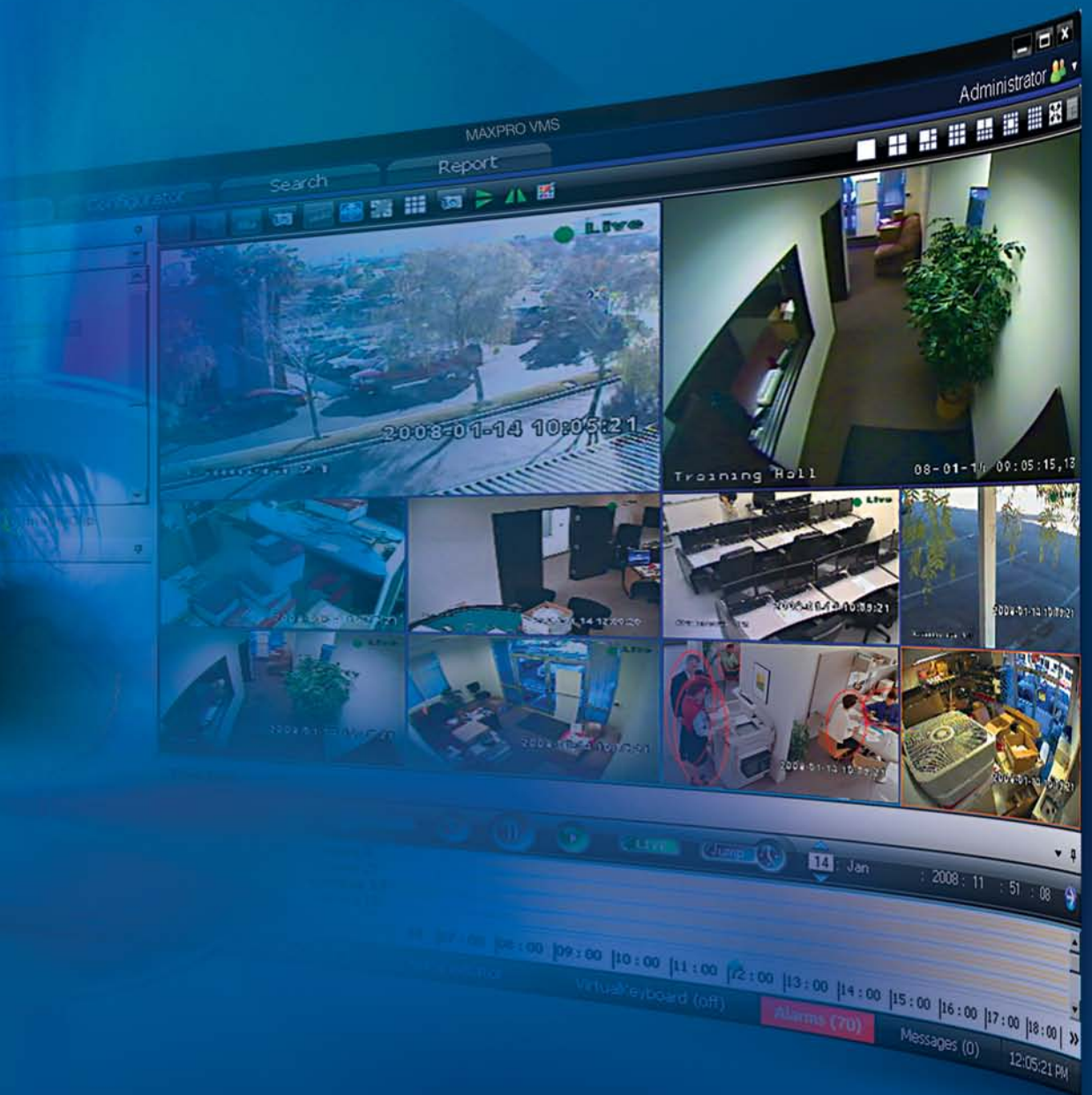


VIDEO MANAGEMENT SYSTEM

**Your One-Stop Platform
for Security Integration**

Honeywell

Honeywell has incorporated our rich knowledge and trusted experience of security and surveillance systems into a powerful and dynamic video management solution that bridges the gap between analog and digital video systems.





Introducing MAXPRO® VMS – A Whole New Way to Manage Video Security

Honeywell's MAXPRO® VMS (Video Management System) controls multiple sources of video subsystems to enhance your video surveillance experience with maximum efficiency and minimum effort. With MAXPRO VMS, you'll discover an intelligent management solution that leverages your existing video infrastructure to collect, manage and present video in a clear and concise manner.

Integration has never been so easy

MAXPRO VMS redefines video security with a framework that integrates to our proven Pro-Watch® security management system. This framework provides a quick way to develop the connection of plug-ins to video and security subsystems, as opposed to bolt-on components. This provides complete control of user provisioning, physical monitors, salvos, and video panels based upon alarm/event actions from Pro-Watch.

And just as easy as it is to integrate with Pro-Watch, MAXPRO VMS rapidly interfaces to video subsystems such as NVRs, DVRs and analog switchers, enabling you to mix and match applications within your existing surveillance platform. It's dynamic technology that offers a whole new way for managing video security.

Designed for Maximum Flexibility

The scalable architecture of MAXPRO VMS enables you to modify your video surveillance network easily when needed. You can downsize the video surveillance network to a single client workstation and server configuration, or you can expand the system to include multiple client workstations and servers.

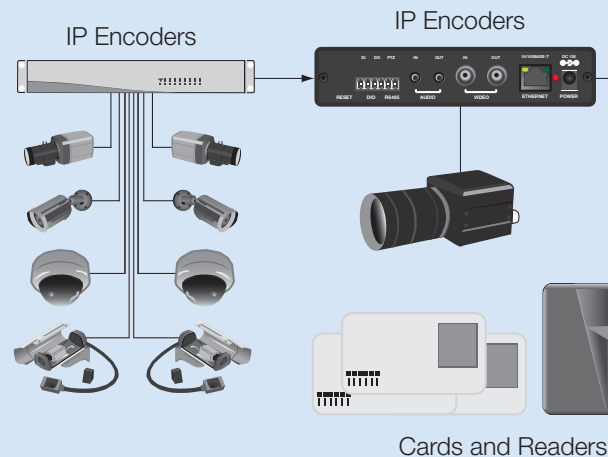
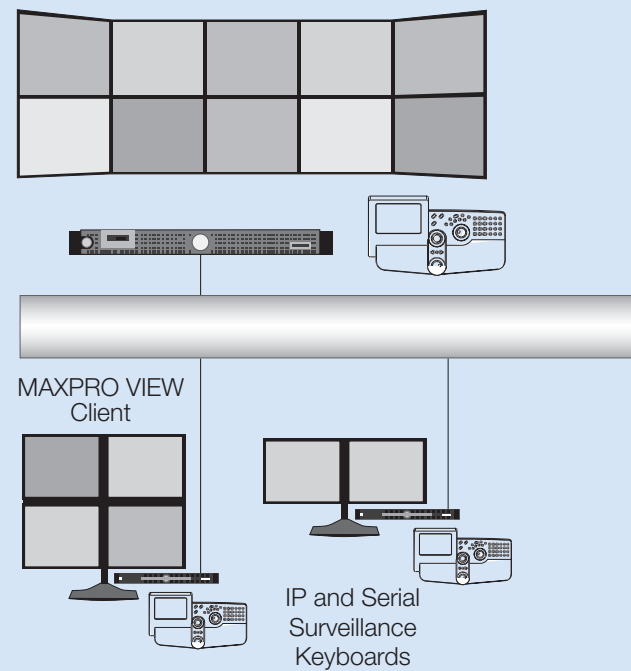
MAXPRO VMS is based on client-server architecture for maximum flexibility, customization and integration.

The MAXPRO VMS client enables the monitoring of sites and the configuration of video devices such as cameras, monitors, keyboards, etc. The server consists of the MAXPRO VMS framework controller and database, and other core components.

Maximize Your Investment

Whether you're working with network-based cameras and recorders or advanced video analytics, the top box architecture of MAXPRO VMS seamlessly integrates your traditional analog components with the latest digital and IP video systems to form a single comprehensive surveillance network.

- Integrates with Pro-Watch to enable superior access control with a wide range of video capabilities
- Redundant server configuration increases system reliability
- Operator messaging feature enables data sharing of incidents among operators
- Auto-discovery of cameras connected to Rapid Eye, Fusion and Enterprise recorders
- User-defined macros to execute common operations





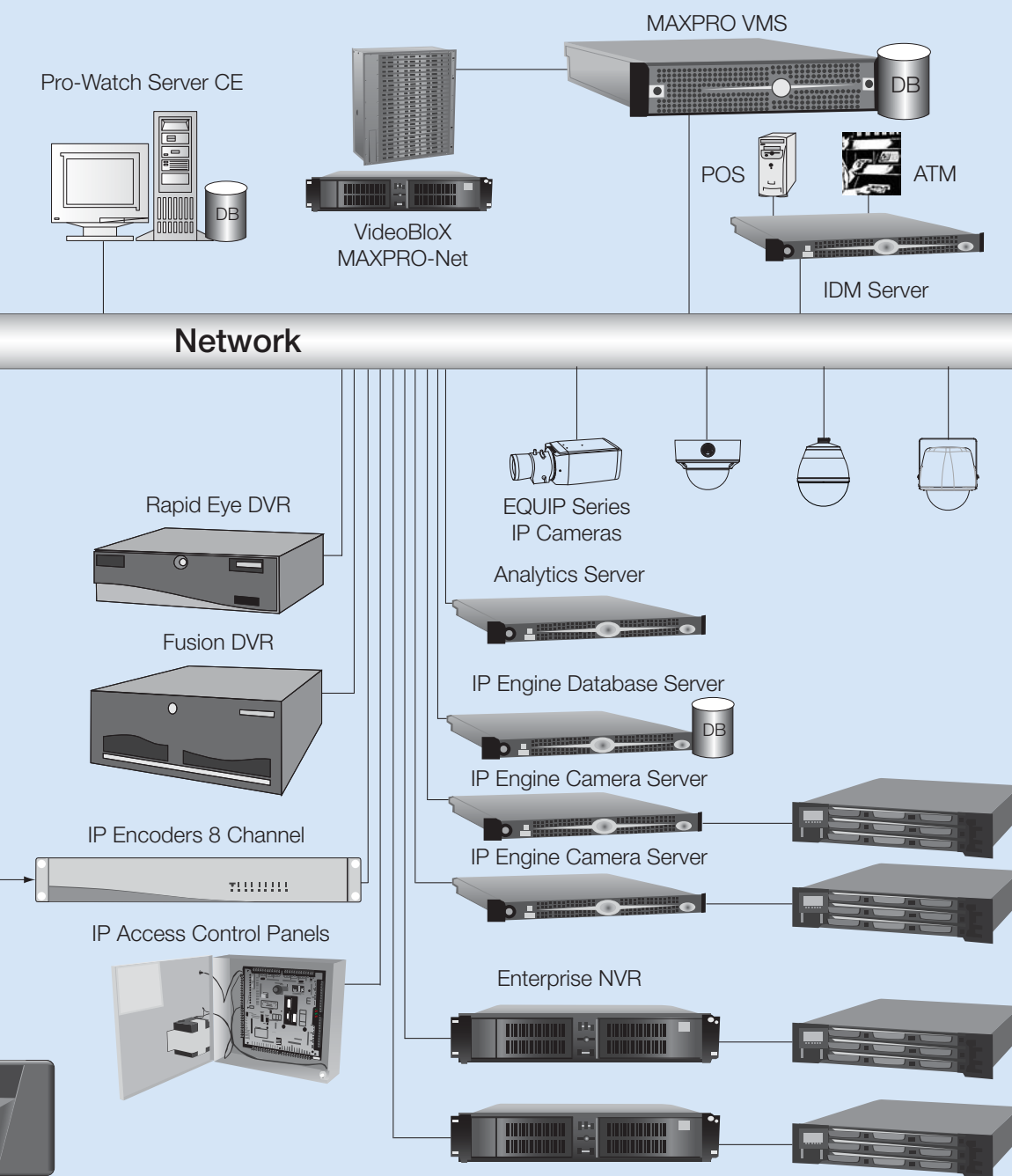
Seamless integration with analog and digital video devices from Honeywell and other third parties:

Analog Devices

- MAXPRO-Net switchers
- VideoBloX switchers
- Pelco switchers

Digital Devices

- IP NVR
- Rapid Eye™ DVR
- Enterprise NVR
- Fusion DVR
- Pelco DVR



MAXPRO VMS Reaches New Heights in Your Market

You can customize MAXPRO VMS to integrate with any number of video devices for any industry around the globe. The MAXPRO VMS platform offers a single command and control interface to efficiently operate various products from an expansive list of video equipment from Honeywell and other third parties. MAXPRO VMS intelligently determines the capabilities of each subsystem across various sites, allowing management of any analog or digital video device through a unified configuration and viewer. The subsystems can be any combination of analog switchers connected to analog monitors and cameras, digital monitors, enterprise network video recorders and digital video recorders. And they can all be managed with virtual switchers, multiplexers and monitors for viewing and recording images from the latest IP cameras.

Open Architecture Gives You Scalability and Control

Easy Installation

- **Install all subsystems easily** using the single installation software package.
- **Auto-discovery** of Rapid Eye, Fusion and enterprise recorders.
- **Exceptional system intelligence** dynamically adapts to capabilities of diversified subsystems.

User-friendly Operation

- **User-friendly interface** provides outstanding usability that enables configuration and control of various devices from a single point and viewing from a single operator console.
- **Group frequently used components** such as cameras, recorders, and other components into a unique My Devices list for each operator.
- **Role-based operator privileges** make it simple to perform various tasks.
- **User-defined macros** enable effortless setup and make it easy to execute commonly performed operations.
- **Multi-language support** allows operators to log on using their local language.

Fingertip Command and Control

- **Powerful operator messaging** lets you share incidents among your operators. An operator investigating a scene sends the salvo to the administrator or another operator. With a simple drag and drop, the receiver views the incident exactly as it appears in the sender's console. This reduces investigation time and increases operator productivity.
- **Navigate an entire span of video recordings** from multiple sources across a diverse set of recorders using state-of-the-art timeline control. Advanced video features such as frame-by-frame analysis, bookmarking, loops and digitally-signed clip export put you in control of monitoring your surroundings.
- **Our patent-pending Video Surround technology** lets you control camera views from a single operator console – enabling you to drag and drop a video source from multiple cameras for simultaneous physical and virtual viewing.
- **Integrated hybrid system** enables seamless control and operation of analog video from digital devices and control of digital monitors from an analog keyboard. It also offers one-click migration support from analog matrix systems.





Expanded Functionality

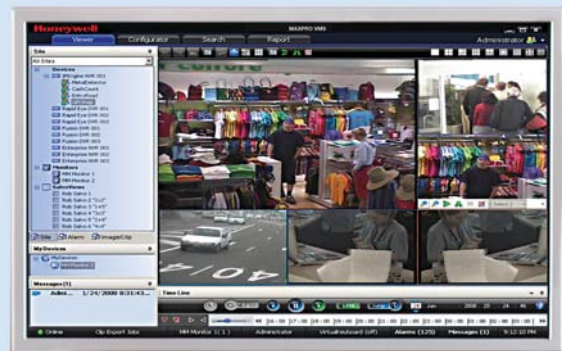
- MAXPRO VMS makes video pursuit possible by simplifying the process of motion detection using a set of surrounding cameras.
- Advanced alarm management lets you view video captured before, during, and after every alarm, and you can also view live video from the camera which recorded the alarm.
- Capture and export clips from multiple NVRs, DVRs and cameras.
- Zoom digital video from PTZ and fixed cameras.

Seamless Integration

- MAXPRO VMS provides world-class integration with enterprise-wide access control and alarm intrusion systems, thereby further maximizing the value proposition of the system to you. It also integrates with Active Alert intelligent video analytics to prevent missed detection and false alarms.
- Integration with Honeywell's Pro-Watch security management system enables superior access control with a wide range of video capabilities.
- Integration with Honeywell's Enterprise NVR and IP Engine offers a truly scalable architecture that can support multiple cameras and camera servers.



MAXPRO VIEW 2x2



MAXPRO VIEW 1+5

Contact us today for more information on how MAXPRO VMS can help you streamline your video security and make your operations more efficient.

Visit www.honeywellvideo.com or call 1-800-796.2288.

*Front Cover: Mystic Lake Casino & Hotel - Shakopee Mdewakanton
Sioux Community designed by the SMSC Gaming Enterprise*

For more information:

www.honeywellvideo.com

Honeywell Security Group

Honeywell

2700 Blankenbaker Pkwy, Suite 150

Louisville, KY 40299

1.800.796.CCTV (2288)

www.honeywell.com

L/MMVDEUB/D
April 2010

© 2010 Honeywell International Inc.

Honeywell